

Photo: Janelle Skarsten, September Calendar Photo Contest Winner

NEWSLETTER

September 2025

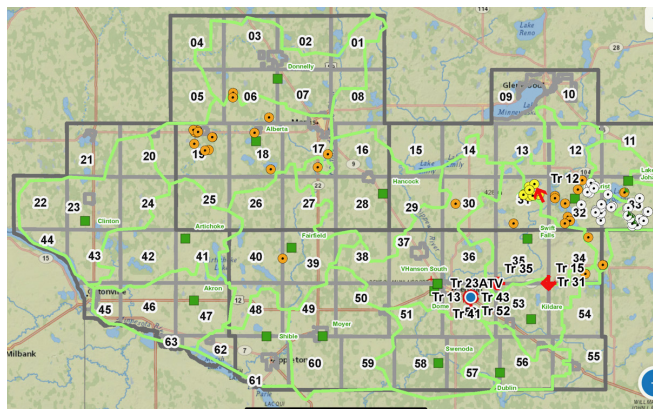
July Storm Recap by Jenny Stryhn, General Manager

Summer storms in Western Minnesota can arrive with little warning, bringing intense winds, heavy rain, lightning, and sometimes hail or tornadoes. These storms not only pose safety hazards to members and line workers, but they can also cause widespread power outages by damaging poles, wires, and other critical infrastructure. Your cooperative, Agralite Electric Cooperative, serves both rural and heavily wooded areas, which can make storm recovery challenging and resource-intensive.

On Sunday, July 27th, we had a widespread severe storm roll through our territory. By 5:30 PM, we had widespread outages on the Alberta, Hancock, Gilchrist, Victor Hanson, and Kildare substations. South of Chokio, we lost 11 3-phase poles in a 1-mile stretch. Crews were able to back-feed most of the members in a couple of hours until we could get manpower and materials together to rebuild the line. We also lost seven poles southeast of Terrace, but were able to back-feed the majority of that as well with a feeder from the Lake Johanna substation. Other outages mainly involved large trees down on the lines and crews worked to get the conductor back in the air and the lines back on. 926601 By about 2:00 AM on Monday, we had everything surveyed and re-energized what we could.

After a short rest, crews went out in the daylight to continue repairs. In addition to the outages from the night before, we experienced an underground fault in the Fairfield area for about 40 members, but were able to isolate and back-feed this line. In addition, a contractor was called in to assist in restoration efforts. The second storm on Monday night brought some new outages, but the Agralite crews were able to restore most outages for the night. On Tuesday, the crews continued putting line back up for uninhabited services and those locations that needed an electrician to help with repairs. By approximately 4:00 PM on Tuesday afternoon, we had all members that could be on, back on.

I want to sincerely thank our electric cooperative members and employees for their unwavering support and dedication during the recent severe storms. It's during times like these that the strength of our cooperative truly shines.



EMPOWERING
communities

with innovative
and sustainable
energy solutions

FOR OVER

85
YEARS

CONTENTS

PAGE 1 ► July Storm Recap

PAGE 2 ► The Agralite Office Is Temporarily By Appointment Only, You're Invited To The Agralite Headquarters Open House, Agralite Donates \$1,250 To The Kerkhoven EDA, Find Your Account Number And Win, Energy Saving Tip

PAGE 3 ► Community Events, Tips To Avoid Energy Scams

PAGE 4 ► 2026 Calendar Photo Contest, Minnesota's Electric Cooperatives To Honor Local Heroes, Unclaimed Capital Credits

PAGE 5 ► Power Line Safety Tips For Farmers, Switch And Save

PAGE 6 ► Board Meeting Minutes, The Value Of Electricity

Agralite Electric Co-op

We're member-owned!

320 US-12, Benson, MN

(320) 843-4150

1-800-950-8375

www.agralite.coop

[f Like us on Facebook](#)



Office Hours:

8:00AM – 4:30PM



Touchstone Energy®

Agralite is a Touchstone Energy® Cooperative.



Find your account number and win a \$100 credit!

If your account number (as it appears on your monthly electric bill) is one of the [four account numbers](#) hidden in this issue, give our office a call by the end of the month and you will receive a \$100 bill credit. If more than one member finds their account number in a single issue, \$100 will be split equally amongst them.

Congratulations

to Darby Greiner & Todd Travis for finding their account numbers in the July newsletter.

Energy Saving Tip:



Take advantage of "shoulder months," which refer to the transitional periods between peak heating and cooling seasons.

During the fall, these milder weeks typically occur between September and November. Shoulder months offer a great opportunity to reduce home energy consumption as the need for extensive heating and cooling is reduced. Look for simple ways to boost indoor comfort without running your heating and cooling system. Use ceiling fans and open windows on breezy days to ventilate your home. On cooler days, add a layer of clothing and avoid running heat.



Call Day or Night
1.888.884.3887

[Do not call the office for outages](#)

September Energy Payment is due October 20.*

*We accept Visa, Discover, and Mastercard.

The Agralite Office Is Temporarily By Appointment Only

We are excited to announce that we have relocated to our new headquarters facility! While we are settling into this new space, please call ahead before stopping by. With contractors on-site, activity in the parking lot, and outside work in progress, scheduling an appointment will help us serve you better during this transition. Our office number is 320-843-4150 or 800-950-8375.

With respect to the ongoing work, we kindly ask that you hold off on any non-business visits or tours at this time. We're excited to show you around our new facility once everything is complete at our open house later this fall. Thank you again for your patience and support!

Ways to Pay Your Bill

Members are encouraged to pay their bill using these payment methods:

- **Auto Pay:** Set it and forget it with automatic monthly payments.
- **Secure Pay:** Call anytime, anywhere at 855-938-3648.
- **SmartHub:** Our member-friendly web or mobile app helps you manage your account from anywhere!
- **By Mail:** PO Box 228, Benson, MN 56215
- **Drop Box:** Located outside our office building

You're invited. OPEN HOUSE

Join us for an open house at our new headquarters facility!

Stop in anytime between 11:00 AM - 2:00 PM to tour our new space, meet the team, and help us celebrate our new facility. A light lunch will be served.

October 28, 2025



320 E Hwy 12, Benson, MN 56215



Agralite Donates \$1,250 to the Kerkhoven EDA

The Kerkhoven EDA is raising funds for their Kerkhoven Daycare Project. Agralite used funds received through administration fees made in part by the Rural Economic Development Loan and Grant program (REDL&G). Agralite also received matching funds for the Kerkhoven EDA from CoBank's Sharing Success Program for a total donation of \$2,500. Agralite is proud to support the expansion of childcare options in Swift County!



Pictured above is Eric Rudningen, District 5 Commissioner; Leanna Larson, Swift County Development Director; and Marissa Chevalier, Agralite's Executive Assistant

Twins YOUTH BASEBALL CLINIC



4th of July Parade
Hancock, MN



Touch-A-Truck Event & Kid Day Parade
Benson, MN



TIPS TO AVOID ENERGY SCAMS



Solar energy is rising in popularity, and so are solar scams. If a salesperson knocks on your door promising free solar panels at zero cost or that you'll never have to pay your energy bills again, it's likely a scam.

If you are interested in solar panels for your home, do your research, get multiple quotes from licensed providers who are reputable, and most importantly, take your time to ensure a smooth process.



Source: Federal Trade Commission

Agralite Electric Cooperative

2026 Calendar Photo Contest

Back By Popular Demand!

Agralite is seeking local photographs for our 2026 calendar contest. Photos should be of a landscape, natural element, or interesting view from within the Agralite service territory. We want you to share the diversity and wonder of our local landscape.

Photo entries are limited to Agralite members and must be submitted by **October 3rd, 2025**.

Digital photos only. You must specify the subject of the photo and where it was taken. Please include your contact information, account number, phone number, and address in your submission.

Selected photos will receive a \$15 bill credit. Cover photo will receive a \$30 bill credit. Photos will be selected by Agralite employees. Please limit 5 photo submissions per member - 1 winning photo per member.

Submit Your Photos To:
mchevalier@agralite.com

This institution is an equal opportunity provider and employer.

To file a program discrimination complaint, complete the USDA Program Discrimination Complaint Form, AD-3027, found online at http://www.ascr.usda.gov/complaint_filing_cust.html and at any USDA office or write a letter addressed to USDA and provide in the letter all of the information requested in the form. To request a copy of the complaint form, call (866) 632-9992. Submit your completed form or letter to USDA by: (1) mail: U.S. Department of Agriculture, Office of the Assistant Secretary for Civil Rights, 1400 Independence Avenue SW, Washington, D.C. 20250-9410; (2) fax: (202) 690-7442; or (3) email: program.intake@usda.gov.

Minnesota's Electric Cooperatives To Honor Local Heroes

Is there someone in your community who consistently goes above and beyond to make a difference? 1378800 Perhaps they've poured their time and energy into helping a local nonprofit thrive, assisted those in need, or spearheaded a community project that has made life better for everyone. If someone comes to mind, now is your chance to recognize their remarkable service and help support their cause or organization.

Agralite Electric Cooperative is proud to partner with Minnesota's Touchstone Energy cooperatives in launching the Cooperative Heroes Award. Minnesota is served by 44 distribution cooperatives, covering 85% of Minnesota and reaching every county. This award provides an opportunity for anyone served by an electric cooperative to nominate an individual who has made meaningful, positive impact in their community.

The Cooperative Heroes Award celebrates Minnesota's cooperative values — integrity, innovation, reliability, accountability and commitment to community. Judges will carefully evaluate nominees for these qualities as they select three outstanding winners.

Each winner will receive funding to support a local nonprofit or cause of their choice: First place \$1,000; second and third place: \$500 each. Nominations are open from Oct. 1 through Nov. 15, with a short application process available at: <https://www.mrea.org/programs/touchstone-energy>. Together, let's shine a light on the community heroes whose dedication has touched lives and inspired change.

Unclaimed Capital Credits

Your Board of Directors authorized the return of just over \$1 million dollars in capital credits to members who purchased electricity during 2002, 2018, and 2019. 1727900 Agralite is trying to return Capital Credits to former members who are no longer at their last address on file with us. If you know someone who is on this list, please take a moment to let them know or to let us know. Past members listed may claim their capital credit refund by contacting our office at 320-843-4150. You can also search for Unclaimed Capital Credits on our website at www.agralite.coop/capital-credits. Capital Credits belong to our members and we hope we can return the credits to their owners! Unsure what to do with capital credit checks received from us or don't want to hassle with them? Donating those funds to Operation Round Up is always an option, where you can help the community that you live in.

Arkell, Sherry - Willmar, MN	Kramer, Carrie - Morris, MN
Armstrong, Ann - Benson, MN	Leonard, Michelle - Glenwood, MN
Aust, Scott - Danvers, MN	Lokken, Jack - Benson, MN
Baker, Clara - Glenwood, MN	Loula, Charles - Chisago City, MN
Bartz, Jon - Ortonville, MN	Maanum, David - Lakeland, FL
Bruer, Marvin - Morris, MN	McKinley, Troy - Annandale, MN
Burns, Patrick - Benson, MN	Mills, Ronald - Benson, MN
Community 1st National Bank - Benson, MN	Molden, Ronald - Milan, MN
Donnelly, Diane - Glenwood, MN	Moline, Don - Benson, MN
Erickson, Susan - New London, MN	Montonye, Mary - Hancock, MN
Flanders, Wesley - Chaska, MN	Olson, Alida - Glenwood, MN
Fonkert, Kellie - Seward, AK	Olson, Mark - Glenwood, MN
Fragodt, Evonne - Benson, MN	Parker, Marty - Glenwood, MN
Healy, Fremont - Willmar, MN	Peoples Natural Gas - Kansas City, MO
Heinzman, Tammy - Converse, TX	Radtke, Gerald - Appleton, MN
Hines, David - Saint Paul, MN	Douglas Rasmusson, Hancock MN
Hjellming, Steven - Bristol, SD	Schutt, Lloyd - Kerkhoven, MN
Huberty, Tina - Morris, MN	Schutt, Russell - Sartell, MN
Jackson, Beth - Ames, IA	Shelstad, Dorothy - Glenwood, MN
Jipson, Joan - Morris, MN	Staples, Steven - Clitherall, MN
Jobe, Rodney - Wadena, MN	Streets, Lisa - Donnelly, MN
Karels, Franklin - Brooten, MN	Tubbs, Dean - Appleton, MN
Kjeldahl, Margie - Willmar, MN	Wagner, Donald - Clinton, MN
Knip, Mardonna - Ortonville, MN	Weatherhogg, Christopher - Minneapolis, MN
Koenig, Kathy - Willmar, MN	

Power Line Safety Tips For Farmers

Farming is considered one of the most dangerous jobs in the United States, with the greatest danger coming from transportation-related incidents. In today's modern world, massive equipment is often equipped with GPS to aid in navigation, but staying vigilant around power lines remains key to safety.

Look Up and Look Out: Farm Safety Reminders

Farm equipment and power line safety is important in preventing injuries, fires, or damage to property. Even with GPS and auto-steering, it is imperative that farmers keep an eye on the equipment location at all times. Here are a few reminders for the farm workers:

- Be aware of your surroundings at all times.
- Keep at least 10 feet of clearance from power lines and electrical equipment.
- Lower power equipment, augers, or elevators before moving equipment.
- Never attempt to raise power lines to clear a path.
- Be sure all farm workers are trained on electrical safety procedures.
- Do NOT use metal poles inside or around grain bins to break up grain.
- Use spotters when operating machinery near power lines or other electrical equipment to ensure safe clearance.
 - Ensure spotters maintain a safe distance and never touch the equipment when near power lines.

Always take the time to locate power lines before starting work. Maintain safe clearance and distance from lines, and know the proper steps to take in case of power line contact.

What to Do if Your Equipment Catches Fire Due to Contact with Power Lines

- Call 911
- Jump off the equipment with both feet together
- Do NOT touch the machinery and the ground at the same time.
- Keeping both feet together, hop away from the vehicle.
- Keep others at least 40 feet away.

By staying alert, being properly trained, and having a safety plan in place, you can protect yourself and your equipment, ensuring a safe and productive harvest season.



Switch and Save

Save Time and Money with Auto Pay and Paperless Billing



How it works

Members who enroll in Auto Pay and/or Paperless Billing through SmartHub will receive a monthly bill credit of \$.50 for each program you enroll in. If you enroll in both, you will earn a \$1 monthly bill credit. Members that enroll will also be entered into a yearly drawing for a special prize.

Get on-the-go convenience and pay anytime, anywhere, plus added security.

Auto Pay

Your payment will be automatically deducted from your bank account or card on the 20th of each month.

Paperless Billing

Members are notified each month by email when their bill is ready. You can view it by clicking on the link in the email or logging into your SmartHub account directly.

How to Enroll

To enroll, log into your SmartHub account:

Auto Pay

Go to **Bill & Pay** >

Auto Pay Program >

Enroll > and add either a card or bank account

Paperless

Go to **Settings** >

Paperless Billing >

Select **Go Paperless**

Questions?

Please contact the billing department at 320-843-4150 with any questions or if you need help enrolling.

www.agralite.coop



CURRENT AGRALITE BOARD OF DIRECTORS

Kathy Draeger, Clinton
District 1

Jeff Hufford, Morris
District 2 - Secretary/Treasurer

Bennett Zierke, Hancock
District 3

Steve Nelson, Starbuck
District 4

Orvin Gronseth, Murdock
District 5 - Vice President

Andrea Thomson, Benson
District 6

Warren Rau, Appleton
District 7 - President

MINUTES OF MEETING BOARD OF DIRECTORS

July 2025

Board Chairman Warren Rau called a meeting of the Board of Directors of Agralite Electric Cooperative to order at 8:30 a.m., July 31, 2025. 1685700 All members of the Board were present, with Director Zierke joining by Zoom. The agenda, minutes of the last meeting, the monthly disbursements, the payment of capital credits of deceased members, Work Order #583, and June Special Equipment were approved.

Jenny Stryhn reported on activities of the Member Services department for the month. She discussed load control for the month. She discussed a battery storage pilot project Agralite is working on and the open custodian position. She discussed recent community events Agralite participated in including the Hancock 4th of July parade, Benson's Touch a Truck and Kid Day parade, and the MN Twins Youth Baseball Clinic.

Stephanie Wroblewski, Manager of Finance/CFO, reported on activities of her department for the month. She discussed margins for the month of June. She discussed the 2024 CFC KRTA. She discussed the 2024 990 Tax Return and the Board approved it.

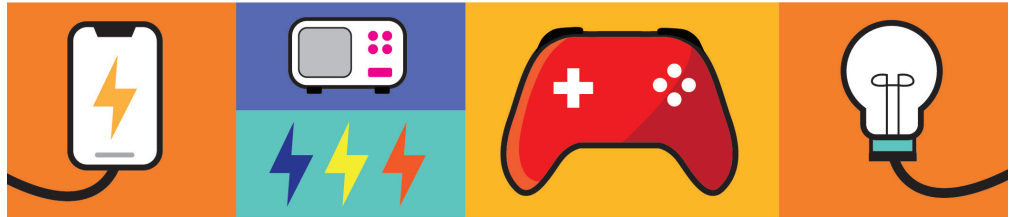
The financials were given by Stephanie with a PowerPoint presentation.

Tom Hoffman, Manager of Engineering


The Value of Electricity

Did you know the average daily cost of electricity is about \$5? When you think about all the ways we use electricity every day, that's a great value!

A day's worth of electricity powers: home heating/cooling, electronics, lighting, major appliances and more.



Look at the everyday items below, then add a plus (+) sign next to the items you think cost more than daily electricity. For items you think cost less than daily electricity, add a minus (-) sign.

1. 	<input type="text"/>	2. 	<input type="text"/>
Large Pizza		1 Movie Ticket	
3. 	<input type="text"/>	4. 	<input type="text"/>
Candy Bar		Video Game	
5. 	<input type="text"/>	6. 	<input type="text"/>
Ice Cream Cone		Plush Toy	

Answer Key: + '9 - '5 + '4 - '3 + '2 + '1

and Operations, reported on activities of his department for the month. He discussed line crew projects and outages for the month. He stated that John Lysen has moved into the Locator position, and that Nathan Bolduc has been hired as an Apprentice Lineman. He discussed the upcoming RESAP observation in October. He discussed the July 27th and 28th storms that hit the territory.

Tom gave the safety report.

Jenny Stryhn, General Manager/CEO, reviewed her report to the board. She discussed the recent rain fall. She discussed the new headquarters facility and upcoming open house. She discussed recent meetings she attended including the CFC Forum, MREA District 3 Meeting, and the GRE

Managers Meeting and strategic planning session. She discussed Basin's proposed 20% rate increase.

Jenny Stryhn will be the NRECA Voting Delegate and Warren Rau will be the alternate. Orvin Gronseth will be the Basin Voting Delegate and Warren Rau will be the alternate.

A roundtable discussion was held regarding rural cooperatives and data centers, the cooperative business model, and self-generation.

The August board meeting was set for the 28th.

Being no further business came before the Board, the meeting was adjourned.